



# FIREBASE RACING CHAIR

INSTRUCTION MANUAL  
ARACEPK20



# **WARNING! READ THE FOLLOWING BEFORE STARTING INSTALLATION**

---

Only use your product when fully assembled as described in the instruction Book. If the product is damaged in any way stop using immediately and consult the store where you purchased your product for guidance.

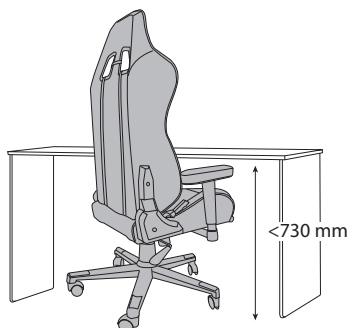
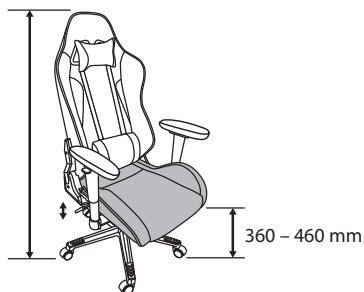
We continually strive to improve our products, specifications may change without prior notice.

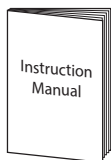
- Incorrect assembly can result in severe personal injury and property damage.
- Do not tilt chair or lean over the sides – always ensure all casters are firmly placed on a level surface.
- Children should not play with the chair.
- Do not lean over the arms. This could cause the product to become unbalanced and result in injury.
- Always use the chair on a flat, stable surface to prevent injury.
- Do not stand on chair.
- If the damaged product is irreparable please dispose of the product. Using a damaged product may lead to personal injury.
- This appliance is intended for indoor household use.
- Only trained personnel can replace or repair seat height adjustment components with energy accumulators.
- To clean the unit, wipe the case with a slightly moist, lint-free cloth.
- Do not use any cleaning fluids containing alcohol, ammonia or abrasives.
- Keep this instruction manual for future reference.

**CUSTOMER HELPLINE (UK Customers Only)**  
**0344 561 1234**

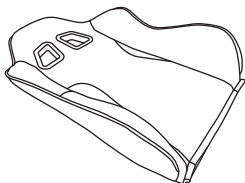


1255 – 1355 mm

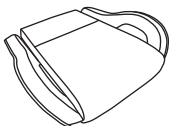




**A** x1



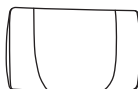
**B** x1



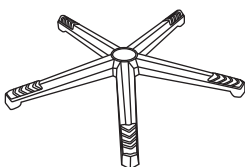
**C** x1



**D** x1



**E** x1



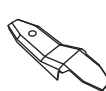
**F** x5



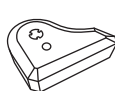
**G** x1



**H** x1



**I** x1



**J** x1



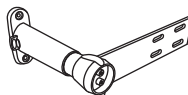
**K** x1



**L** x1



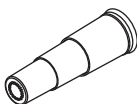
**M** x2



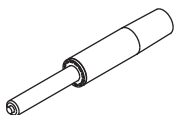
**N** x2



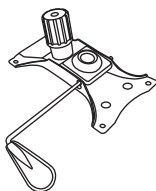
**O** x1



**P** x1



**Q** x1



**R** x19



M8 x 25

**S** x1



M8 x 40

**T** x4



M6 x 18

**U** x4



M5 x 10

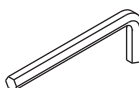
**V** x4



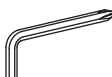
**W** x6



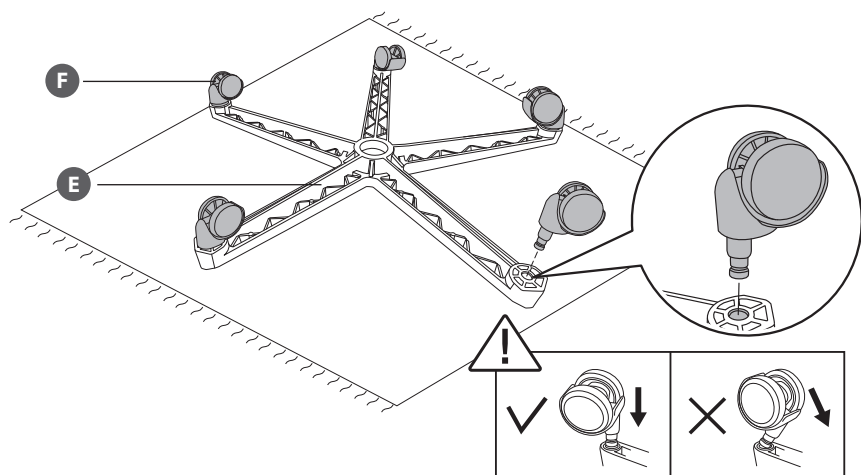
**X** x1



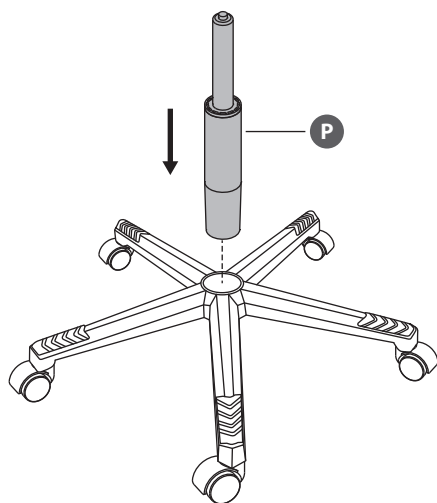
**Y** x1



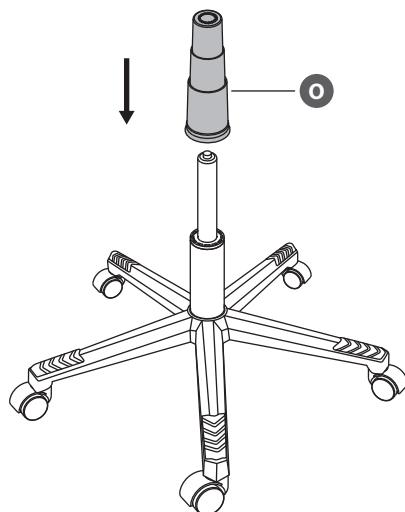
1



2



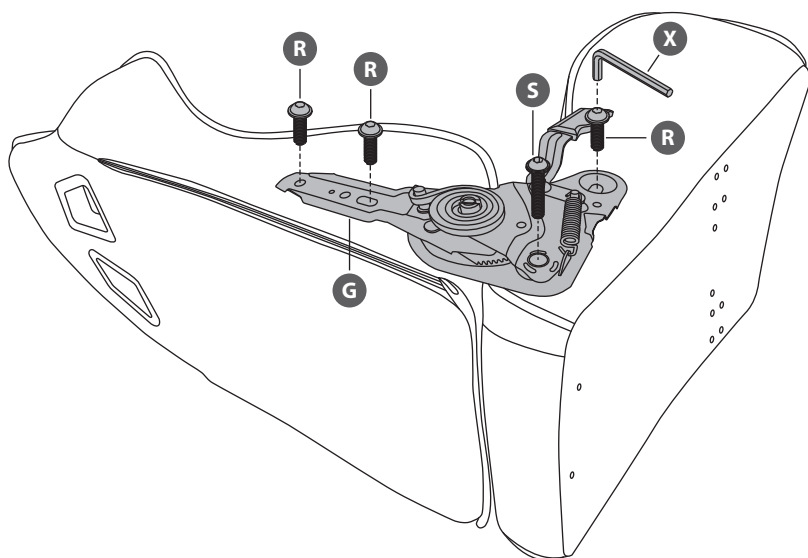
3



4



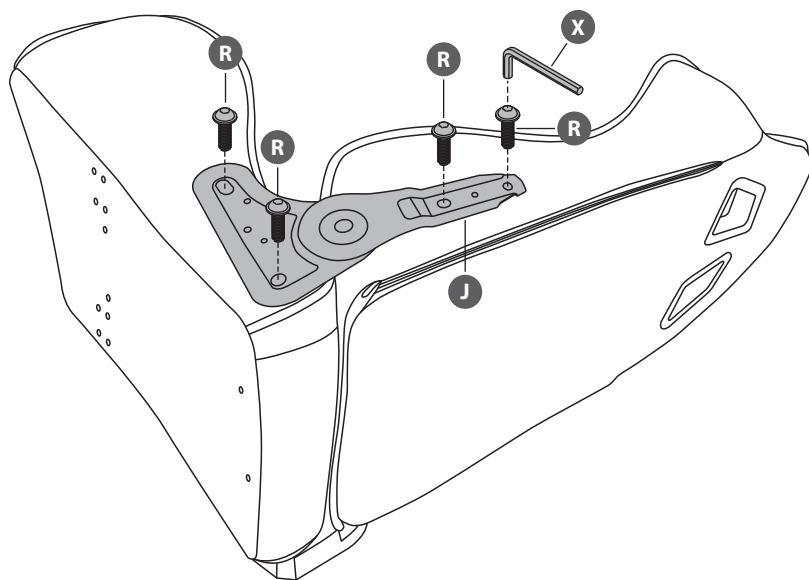
Do not overtighten the screws during step 4 and 5.



5



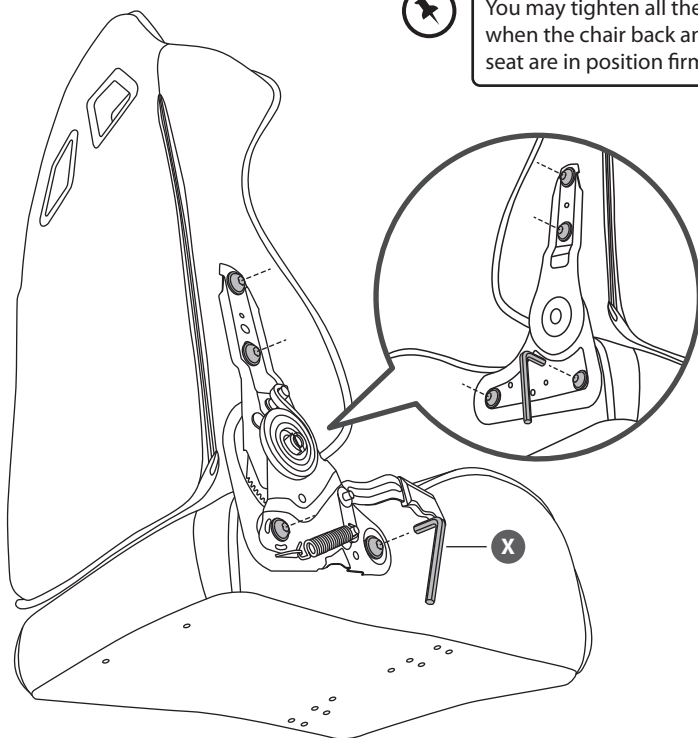
If you find difficult to insert the screws, slightly loosen the screws installed in step 4.



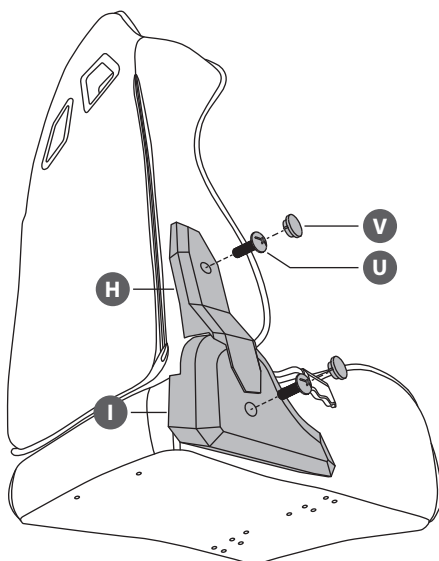
6



You may tighten all the screws when the chair back and chair seat are in position firmly.

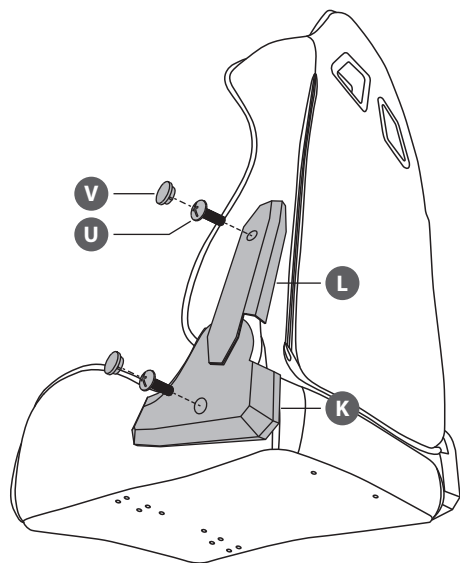


7

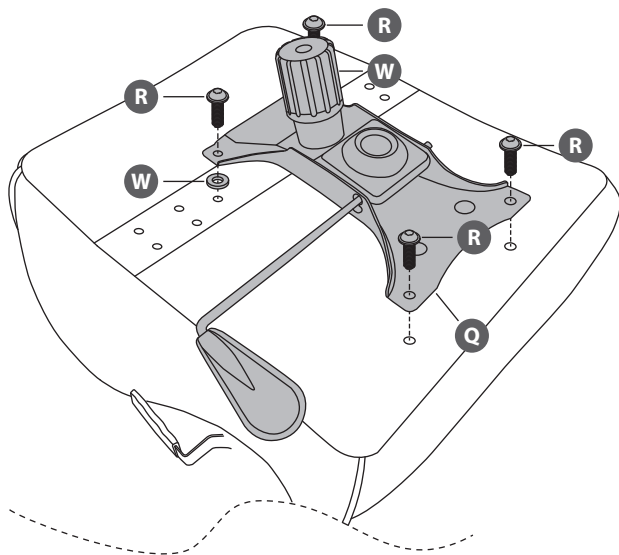




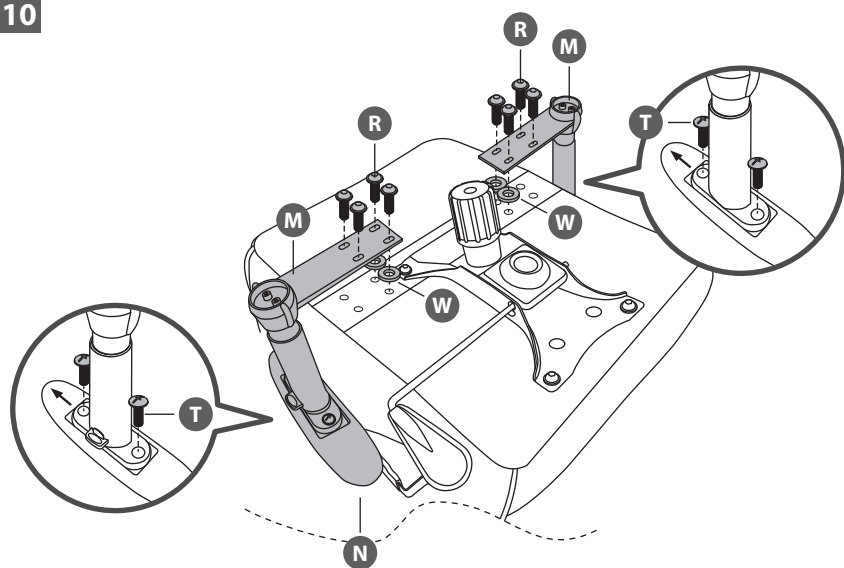
8



9

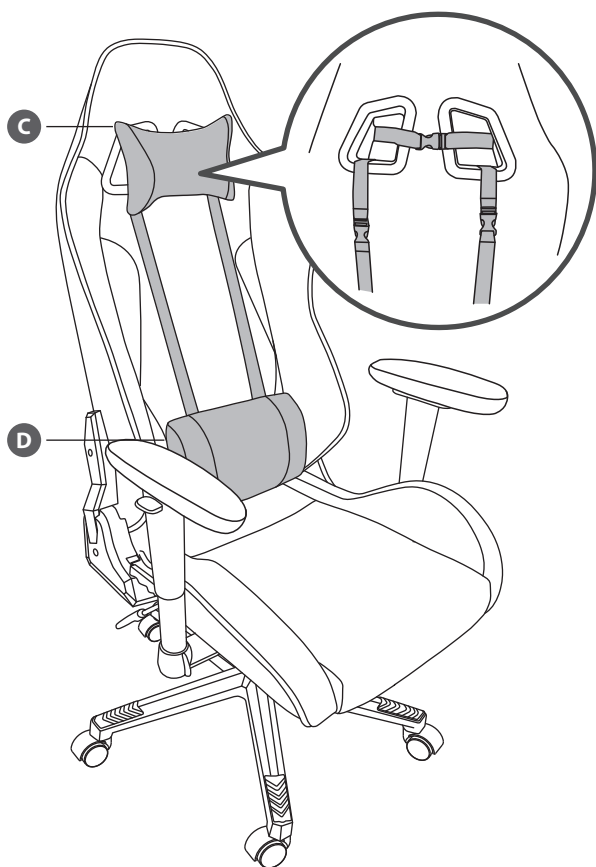


10



11





## **Currys.co.uk**

**All the support you need.**

Whether it's a tech emergency or  
you need plain good advice, we're  
always on hand to help.

UK: 0344 561 1234

IRE: 1 890 818 575

**Partmaster**  
\_\_\_\_\_.CO.UK

Visit [Partmaster.co.uk](http://Partmaster.co.uk) today for the easiest way to buy electrical spares and accessories.

With over 1 million spares and accessories available we can deliver direct to your door  
the very next day. Visit [www.partmaster.co.uk](http://www.partmaster.co.uk) or call **0344 800 3456** (UK customers only).

Calls charged at National Rate.

DSG Retail Ltd. (co. no. 504877)  
1 Portal Way, London, W3 6RS, UK

### **EU Representative**

DSG Retail Ireland Ltd (259460)  
3rd Floor Office Suite  
Omni Park SC, Santry, Dublin 9, Republic of Ireland