



FIREBASE CC23 Cockpit Racing Chair

INSTRUCTION MANUAL

ADXCPC23



Safety Warnings

Read all the instructions carefully before using the unit and keep them for future reference. Retain the manual. If you pass the unit onto a third party, make sure to include this safety and the instructions manual.

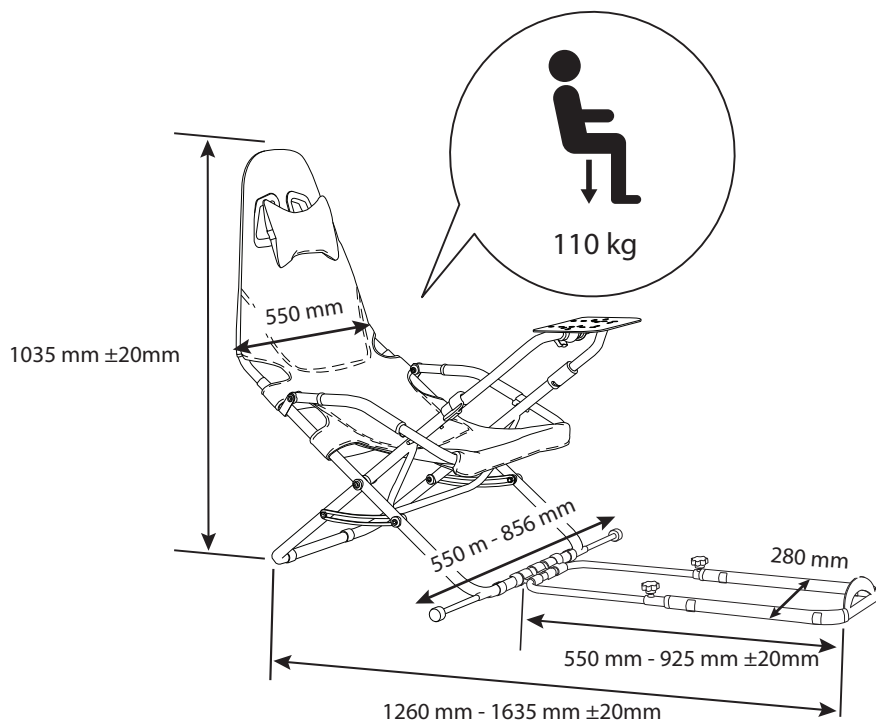
Caution!

- After unpacking, make sure the product is complete and undamaged.
- Keep all packaging material (plastic bags, polystyrene foam) out of reach of children.
- Use the product on a flat surface.
- Do not use the product in case of obvious damage.

Warnings!

- Only use this product when fully assembled.
- Do not overload your chair.
- Do not tilt the chair or lean over the sides – always ensure all casters are firmly placed on a level surface.
- Children should not play with the chair.
- Do not sit on the armrests.
- Do not lean over the armrests. This could cause the product to become unbalanced and result in injury.
- Always use the chair on a flat, stable surface to prevent injury.
- Do not use on slippery floor.
- Do not stand on the chair.
- If the damaged product is irreparable please dispose of the product. Using a damaged product may lead to personal injury.
- This product is intended for indoor household use.
- Do not put your fingers into the gaps of revolving parts.
- Fastening parts and wearing parts should regularly be checked for tightness and abrasion.
- To clean the unit, wipe the surface with a slightly moist, lint-free cloth.
- Do not use any cleaning fluids containing alcohol, ammonia or abrasives.
- Keep the original packaging for any future transporting requirements.
- Instruction manual needs to be kept for further inquiries and references.
- Do not leave your child unsupervised.
- Fully extend the expandable poles after placing the chair on the floor.
- After folding the unit, make sure that it is securely bound with the holding strap.
- While unlocking the steering wheel stand, make sure that the steering wheel support is securely locked.
- Secure the locks after making any adjustments.
- Make sure that user is out of the unit while adjusting the seat position.

CUSTOMER HELPLINE (UK Customers Only)
0344 561 1234



Thank you for purchasing your new product.

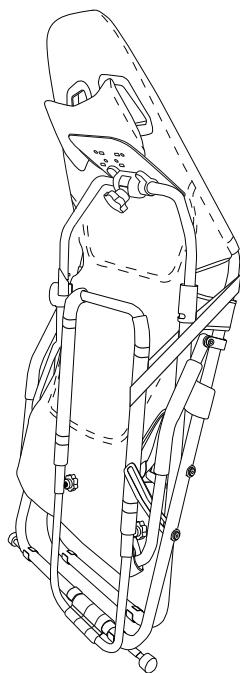
We recommend that you spend some time reading this instruction manual in order that you fully understand all the operational features it offers. You will also find some hints and tips to help you resolve any issues.

Read all the safety instructions carefully before use and keep this instruction manual for future reference.

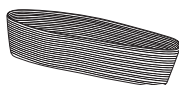
Unpacking

Remove all items from the packaging. Retain the packaging. If you dispose of it please do so according to local regulations.

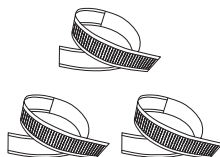
The following items are included:



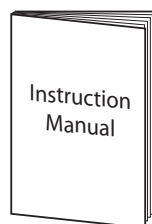
Gaming Chair



Elastic band
(for binding the foot pedals)

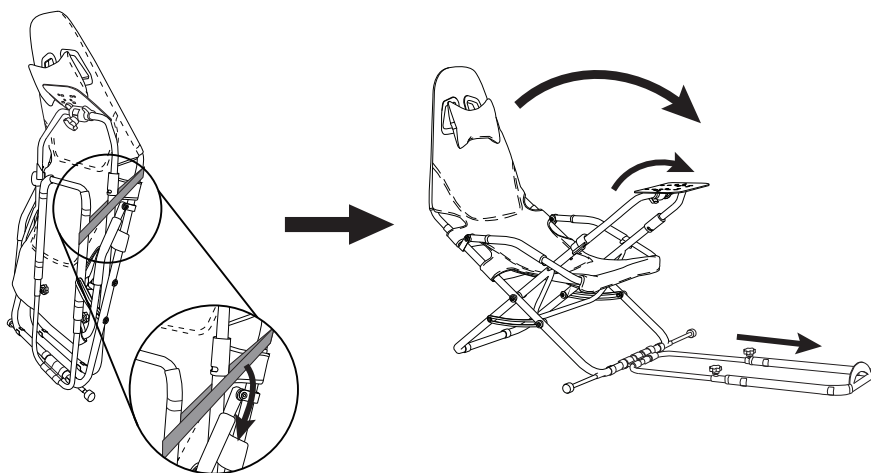


Hook-and-loop fastener × 3
(for binding the cables of
other gaming devices)

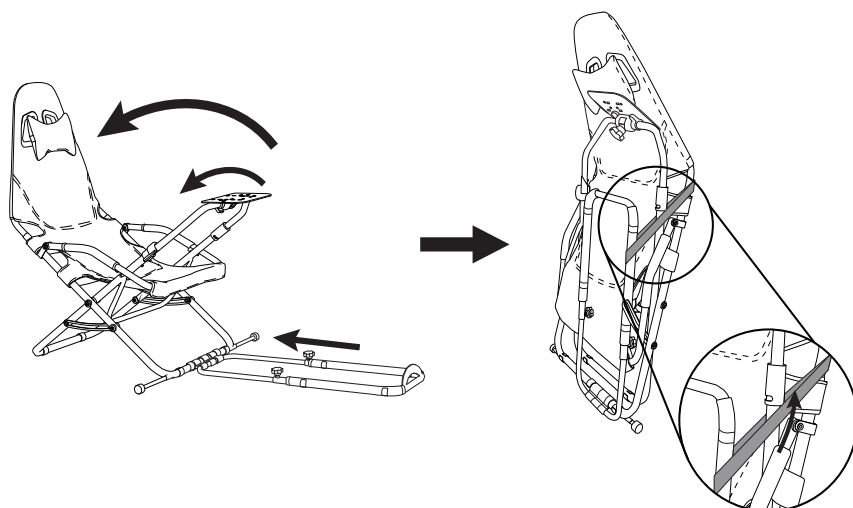


Instruction Manual

Unfold the Gaming Chair



Fold back the Gaming Chair

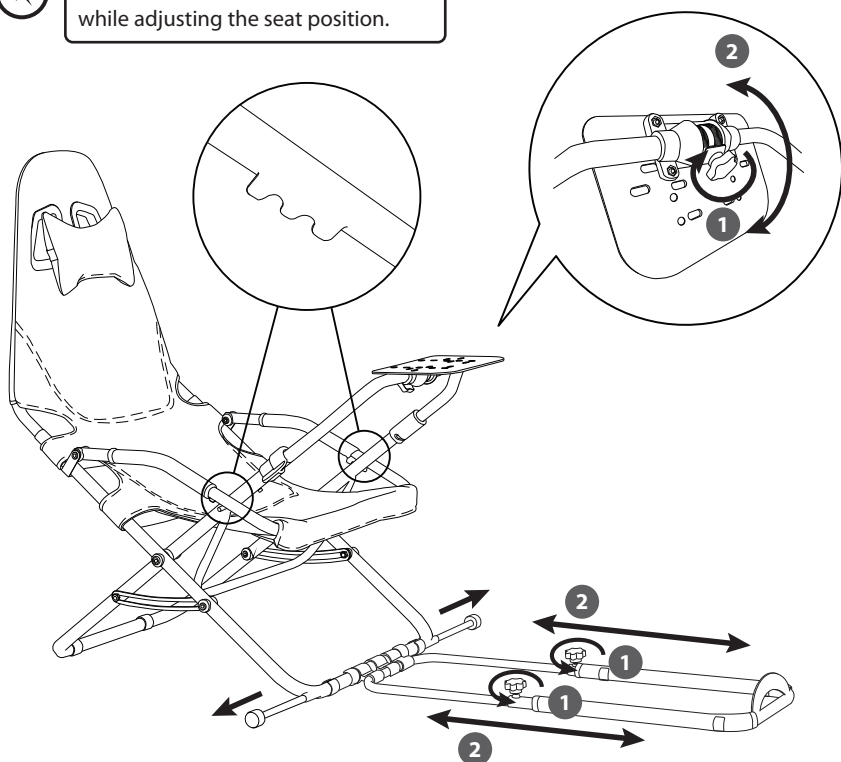


After folding, make sure that it is securely bound with the holding strap.

Seat Adjustments

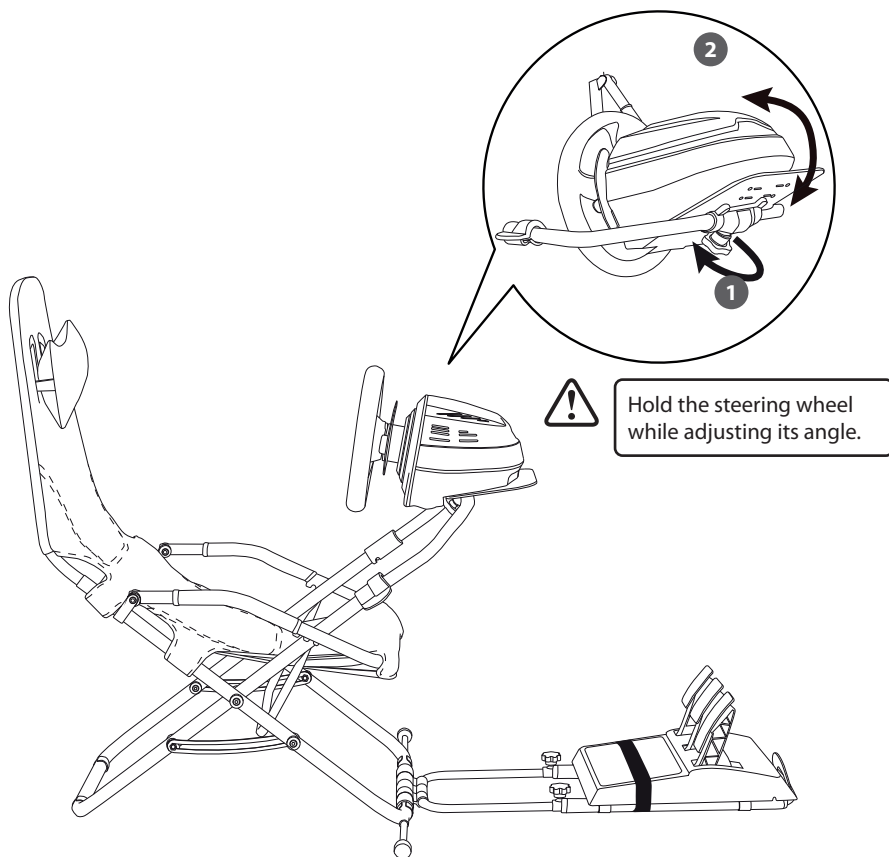


Make sure that user is out of the unit while adjusting the seat position.



Fully extend the expandable poles after placing the chair on the floor.

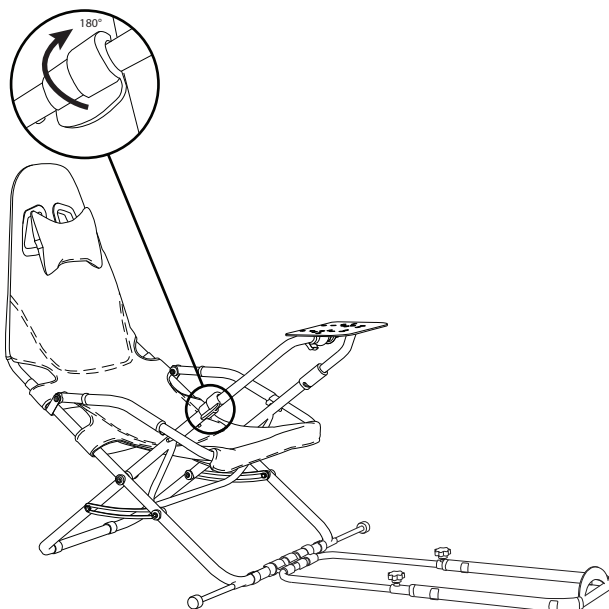
Steering Wheel (not included) Adjustment



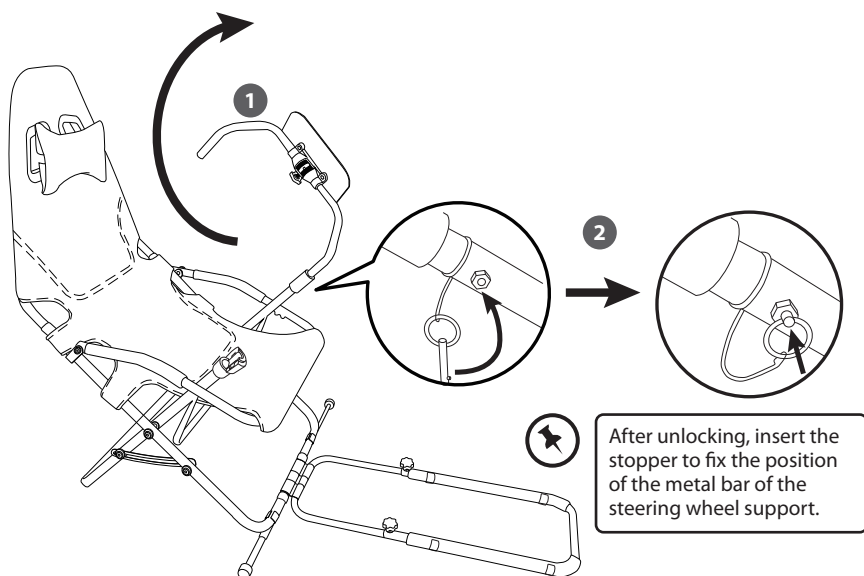
* Steering wheel and foot pedals are not included.

Unlock the Steering Wheel Stand

1

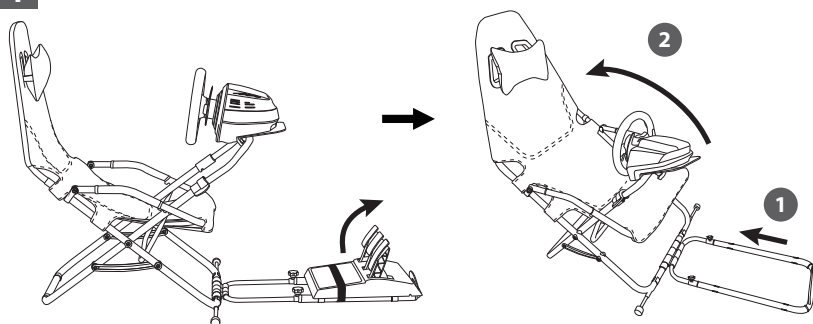


2

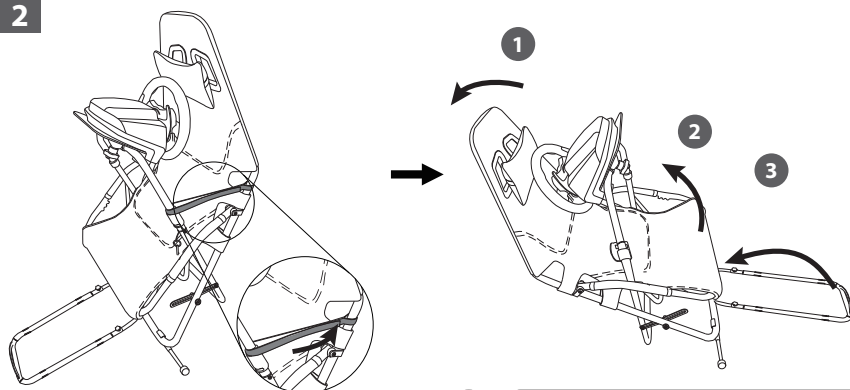


Fold the Gaming Chair with Steering Wheel (not included) installed

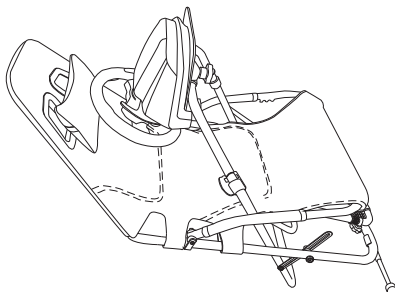
1



2

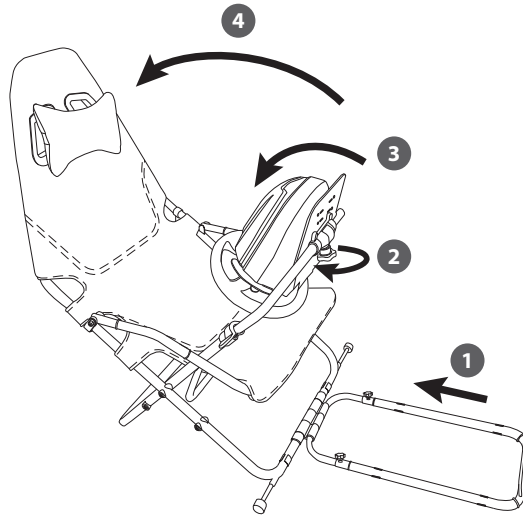


3



Lay down the unit on the floor for the above folding step.

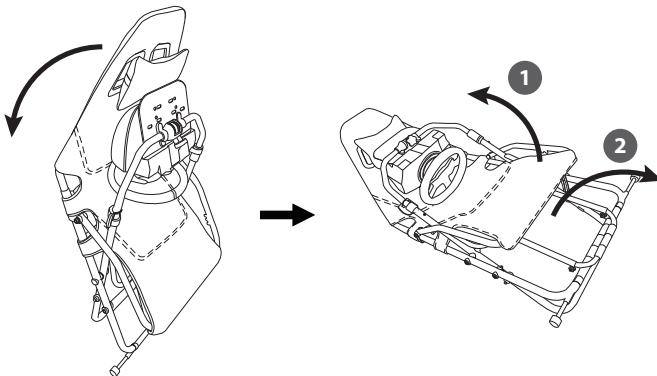
Storage Tips



For saving space, slide the steering wheel back before folding the unit.

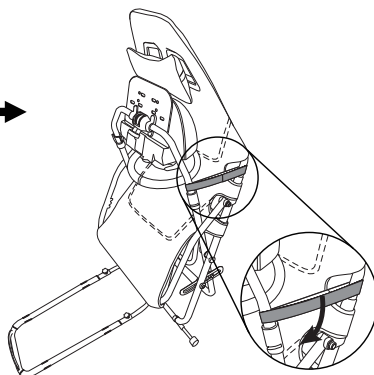
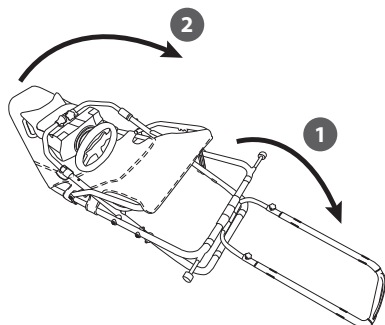
Unfold the Gaming Chair with Steering Wheel (not included) installed

1

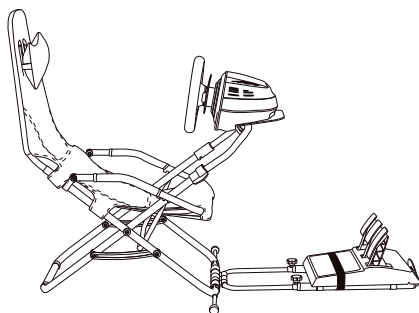
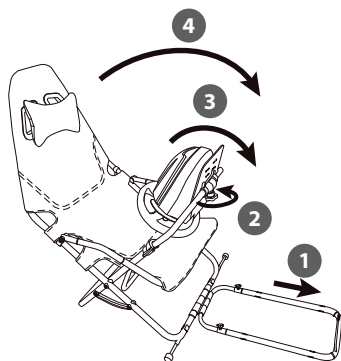


Lay down the unit on the floor before unfolding the unit.

2



3



Make sure that the steering wheel support is securely locked after adjustment.



Fix the foot pedals (not included) onto the unit with the provided elastic band.

Currys.co.uk

All the support you need.

Whether it's a tech emergency or
you need plain good advice, we're
always on hand to help.

UK: 0344 561 1234

IRE: 1 890 818 575

Partmaster
_____.co.uk

Visit Partmaster.co.uk today for the easiest way to buy electrical spares and accessories.

With over 1 million spares and accessories available we can deliver direct to your door
the very next day. Visit www.partmaster.co.uk or call **0344 800 3456** (UK customers only).

Calls charged at National Rate.

Currys Group Limited (co. no. 504877)
1 Portal Way, London, W3 6RS, UK

EU Representative

Currys Ireland Limited (259460)
3rd Floor Office Suite
Omni Park SC, Santry, Dublin 9, Republic of Ireland